

020-0850
e-LOCK
Pull Handle



TriMarks' NEW 020-0850 e-LOCK Pull Handle for off-road applications allows power locking/unlocking via a switch, remote RF FOB or keypad. Based on the proven 020-0800, this robust pull handle brings a new automotive function and convenience to your cabs and enclosures.

DESIGNED FOR:

- Medium to heavy-duty agricultural and construction personnel doors
- Off-highway vehicle applications that require a direct release surface mounted exterior pull handle

Global Locations:

TriMark Corporation
500 Bailey Avenue
P.O. Box 350
New Hampton, Iowa 50659
United States
Tel: 641-394-3188
Fax: 641-394-2392
1-800-447-0343
www.trimarkcorp.com

TriMark Europe
Cedar Court
Walker road
Bardon Hill
Coalville LE67 1TU
United Kingdom
Tel: +44(0)1530 512460
Fax: +44(0)1530 512461
www.trimarkeu.com

TriMark (Xuzhou)
Building A5 Jingwu Road
Xuzhou Economic
Development Zone
Xuzhou, Jiangsu
221004 PR China
Tel: +86 516 8773 0018
Fax: +86 516 8773 0058
www.trimarkcn.com



TriMark. Interactive. Product. Selector



TriMark



TriMark Corporation

FEATURES/BENEFITS:

- Provides for greater ease of operation (ergonomics) than conventional push button or paddle handles; includes gas-assist molded handle
- Provides the ability to remotely lock the exterior pull handle
- Handle is rigid when locked
- KeyOne™ Plus lock cylinder can be keyed alike with most single and reversible key systems
- Readily adaptable to a variety of door thickness with adjustable connecting link assembly
- PTC overload to protect motor against excessive heating



MATERIAL:

- Handle and base: glass reinforced nylon
- Threaded inserts: brass

INSTALLATION:

- Same mounting pattern as 020-0800 Pull Handle — mounts against glass with only two holes or steel with conventional mounting
- Installed with (3) M6 X 1.0 bolts (not included)
- Recommended mounting fastener torque to be 5.6-6.7 N-m (50-59 lbf-in)
- Wire length is 200mm
- Connector customization is available

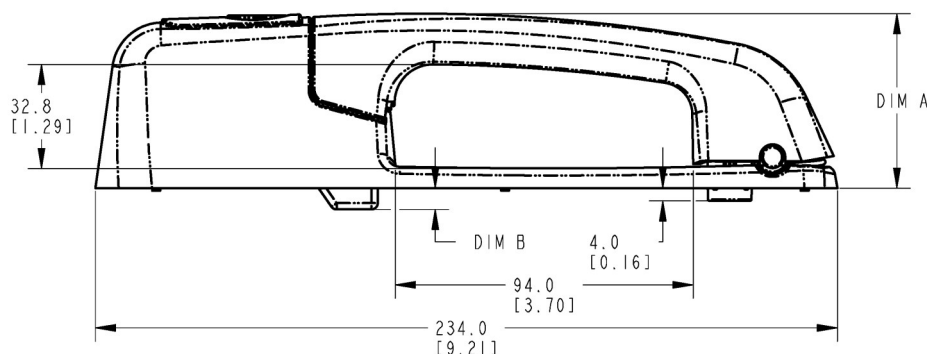
U.S. Patent No. 7,819,440

CAUTION: Product does not meet the locking requirements for FMVSS 206 (ECE R11).

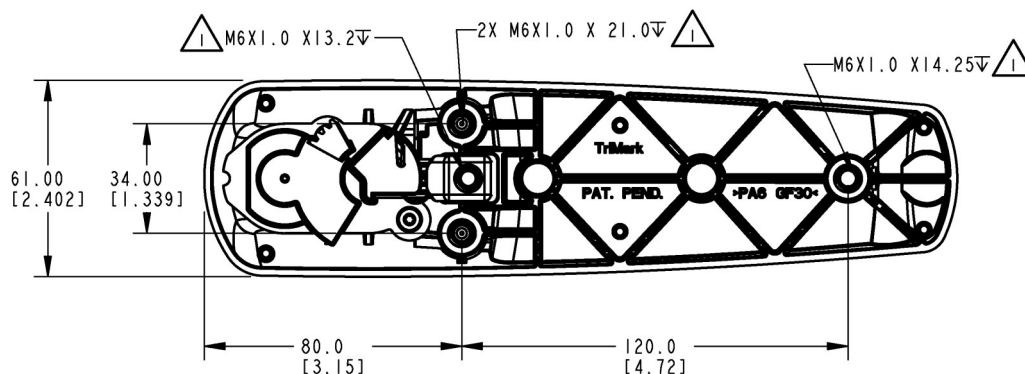
Individual part dimensions are for reference only. Refer to individual part drawings for complete dimensions, specifications, and installation procedures. Engineering assistance and application drawings are available.

AVAILABLE:


- With perimeter gasket and spacers to facilitate mounting and provide resistance to water and dirt infiltration
- Non-power locking version

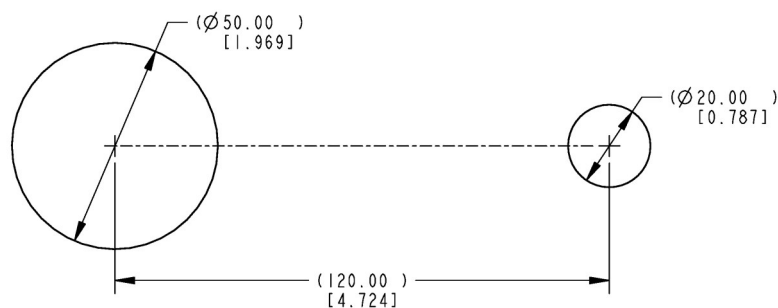


BASE OPTION	DIM A	DIM B
STD (HEIGHT OPTION 1)	55.0 [2.17]	6.7 [0.26]
THICK (HEIGHT OPTION 2)	61.1 [2.41]	0.6 [0.02]



NOTES: UNLESS OTHERWISE SPECIFIED;

 RECOMMENDED APPLICATION TORQUE TO BE 5.6-6.7 N-m [50-59 IN-LB].



Technical drawing of a mechanical part with dimensions in mm and inches. The drawing shows a side view of a component with a central rectangular feature and a circular feature on the right. Dimensions are provided in mm (top) and inches (bottom) in parentheses.

Dimensions (mm / inches):

- Overall width: 120.00 (4.724)
- Overall height: 34.00 (1.339)
- Top hole diameter: $\varnothing 6.60$ (0.260)
- Top hole position from left: 17.00 (0.669)
- Top hole position from right: 10.00 (0.394)
- Bottom hole diameter: $\varnothing 6.60$ (0.260)
- Bottom hole position from left: 17.00 (0.669)
- Bottom hole position from right: 10.00 (0.394)
- Central feature width: 24.0 (0.94)
- Central feature height: 17.0 (0.67)
- Central feature corner radius: 4X R2.5 (0.10)
- Right circular feature diameter: $\varnothing 15.00$ (0.591)
- Distance from left edge to right circular feature center: 110.00 (4.331)

RECOMMENDED STEEL MOUNTING DOOR CUTOUT DETAIL